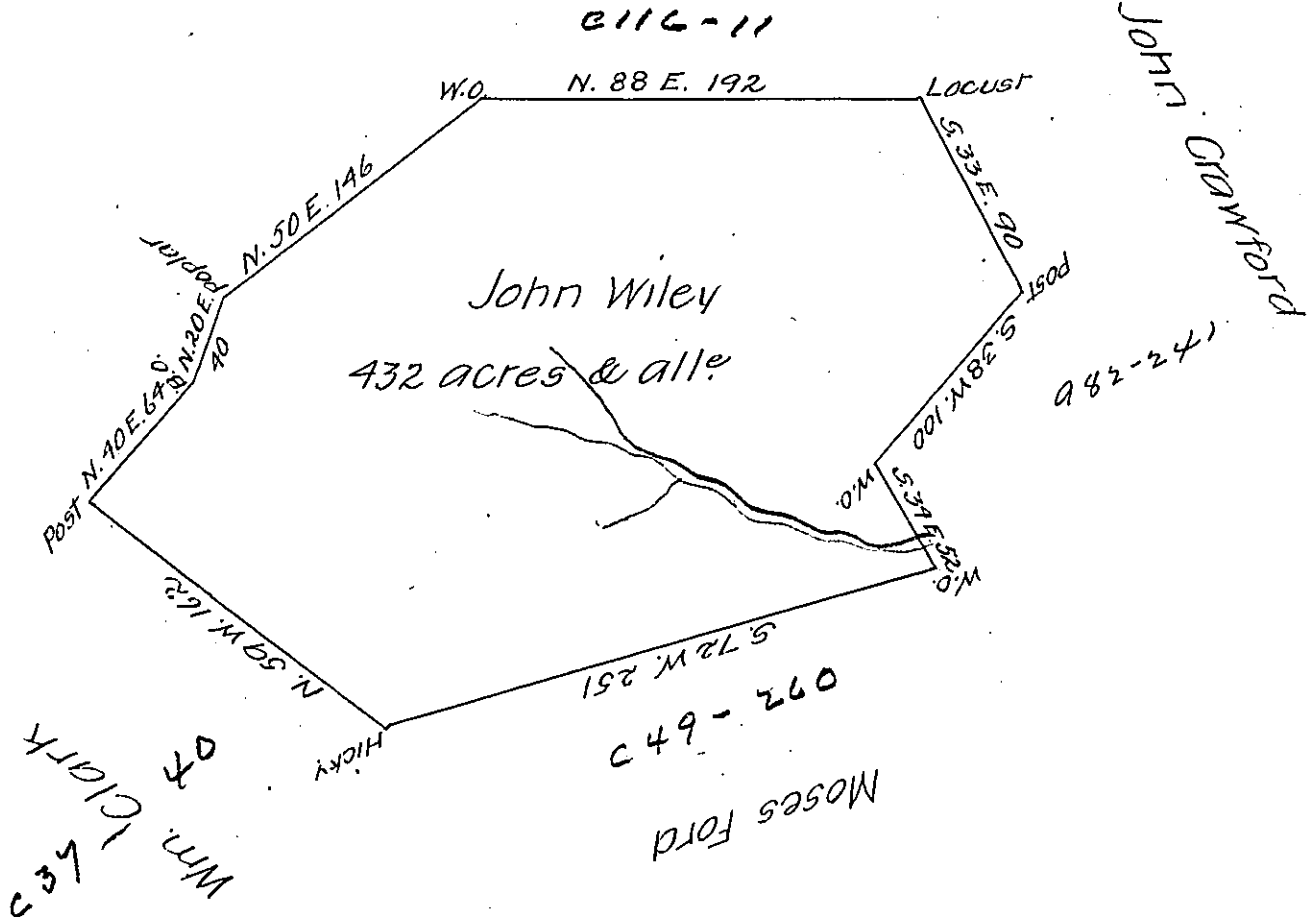


Matthew Lynn



In Pursuance of a Warrant bearing date August 29th. 1785
 Surveyed on the 6th day of November following unto John Wiley
 the above discribed Tract of Land Situate in Mount pleasant Town-
 ship in the County of Westmoreland Containing four Hundred and
 Thirty two acres & allowance of Six pCent for roads &c.

Benj. Lodge, D.S.

To John Lukens Esquire }
 Surveyor General }

IN TESTIMONY that the above is a copy of the original remaining on file in
 the Department of Internal Affairs of Pennsylvania, made
 conformably to an Act of Assembly approved the 16th day of
 February, 1833, I have hereunto set my Hand and caused
 the Seal of said Department to be affixed at Harrisburg,
 this eleventh day of April 1907

Leach D. Brown
 Secretary of Internal Affairs.